

# Correctional Studies



Candidate guide

## Copyright

---

Saskatchewan Institute of Applied Science and Technology – June 2005

No part of the work(s) contained herein may be reproduced or copied in any form or by any means - graphic, electronic, or mechanical, including photocopying, recording, taping of information and retrieval systems - without written consent of the Saskatchewan Institute of Applied Science and Technology.

The Correctional Studies program is dedicated to removing barriers and broadening the access to programs at SIAST. We believe that adults acquire knowledge and skills through life and work experience that may align with courses within our programs.

<b>Developed by program</b>	June 2005			
<b>Revised</b>	April 2009	April 2011		
<b>Web ready – PLAR office</b>	June 2009	May 2011		

## Table of contents

---

Why consider a PLAR assessment? .....	5
What are the PLAR options?.....	5
Option A: Individual course challenge.....	5
Fees:.....	5
Option B: Block assessment.....	5
Fees.....	5
Option C: Program level certification .....	6
Fees.....	6
How many courses can be challenged through PLAR? .....	12
Which courses are PLAR-ready? .....	12
Is PLAR available at any time of the year?.....	14
Is it easier to challenge a course through PLAR - OR - take the course?.....	14
Methods of assessing prior learning .....	14
If I live out of town, do I have to travel to a main campus to do PLAR?.....	15
What if I have a disability & need equity accommodations? .....	15
Are there other methods to gain SIAST course credits for prior learning?.....	15
Contact us.....	16
The PLAR Process .....	17
Guiding principles for developing a PLAR evidence file.....	18
Types of evidence .....	18
How long will it take to prepare evidence for PLAR? .....	19
Steps to complete a self-audit .....	19
Self-audit guide(s) .....	20
<b>Year 1</b> .....	20
CLTR 120 - Diversity .....	20
COMM 112 – Interpersonal Competence .....	22
COMM 119 – Writing Skills.....	23
COMM 202 – Conflict Resolution Strategies .....	25
COMM 224 – Presentation Skills .....	26
COMM 227 – Interviewing .....	27
CORR 134 – Abnormal Behaviour .....	28
CORR 135 – Criminology .....	29

## Table of contents

---

CORR 167 – Criminal Justice System .....	30
CORR 175 – Introduction to Corrections .....	31
CORR 176 – Youth Justice .....	32
CORR 177 – Women in Corrections .....	33
HLTH 120 – Communicable Diseases .....	34
HUMD 142 – Lifespan Issues .....	35
LAW 162 – Criminal Law.....	36
LEGL 161 – Restorative Justice .....	37
LERN 140 – Academic Management .....	38
NAST 120 – Aboriginal Studies.....	39
PERS 142 – Personal Wellness .....	41
SPSY 123 – Suicide Intervention .....	43
SPSY 124 – Professionalism and Ethics in Corrections .....	44
SPSY 240 – Workplace Harassment Prevention.....	45
<b>Year 2</b> .....	46
CORR 158 – Sex Offenders .....	46
CORR 179 – Offender Supervision .....	47
CORR 183 – Correctional Reporting Procedures .....	48
CORR 184 – Introduction to Case Management .....	49
CORR 185 – Managing the Offender Case Plan.....	50
CORR 186 – Offender Release and Community Supervision .....	51
CORR 187 – Violent Offenders .....	52
CORR 188 – Program Planning and Delivery.....	53
CORR 240 – Institutional Corrections.....	54
CORR 241 – Security Foundations .....	55
CORR 242 – Elements of Security.....	56
CORR 243 – Major Incidents.....	57
CORR 245 – Job Preparation.....	58
EMPS 240 – Workplace Wellness .....	59
SPSY 121 – Addictions .....	60
SPSY 241 – Family Violence .....	61
WORK 123 – Corrections Institutional Work Experience.....	62
WORK 124 – Corrections Work Experience.....	63

## Why consider a PLAR assessment?

---

PLAR refers to the combination of flexible ways of evaluating people's lifelong learning, both formal and informal against a set of established standards. You can receive academic credit for your relevant lifelong learning. The Correctional Studies program recognizes prior learning in a number of ways.

We recognize:

1. Previous formal learning from an accredited training institution through transfer of credit.
2. Previous informal learning or experiential learning through a comprehensive prior learning and recognition process.

## What are the PLAR options?

---

To be eligible for PLAR, an applicant must first register or already be registered as a SIAST student.

### Option A: Individual course challenge

If you have experience in the Correctional Studies field, and have learned the skills and knowledge for **one or more** of the Correctional Studies courses, you may apply to be assessed for each applicable course.

#### Fees:

- There will be a charge for each individual course assessment.
- For a listing of the specific PLAR fees, check the [PLAR database](#) or call SIAST and ask to speak to the PLAR advisor/counsellor assigned to the Correctional Studies program at: 1-866-467-4278 or 1-866-goSIAST.

### Option B: Block assessment

A block assessment is available for students who have completed a portion of the Correctional Studies Program (eg first year), who are currently employed in the industry and who wish to challenge the remainder of the program. Candidates will be assessed individually based on the portion of the program that has been completed and their current work experience.

Eligibility criteria:

- Completion of Year 1 content of Correctional Studies program and employment as a Correctional Officer.

#### Fees:

- Blocks assessments will be assessed on an individual basis based on courses in each block.
- For a listing of the specific PLAR fees, check the [PLAR database](#) or call SIAST and ask to speak to the PLAR advisor/counsellor assigned to the Correctional Studies program at: 1-866-467-4278 or 1-866-goSIAST.

## Option C: Program level certification

Eligibility criteria:

- Completed 3 or more years of recent (within the past 10 years) successful experience in the corrections field as a Corrections Officer.

**Fees:**

- For whole program challenge, please refer to the [PLAR database](#).

## Diploma Level Certification

In order to be eligible for Diploma Level Certification, individuals must provide the following documentation:

Verification of a minimum of three years of experience as a Correctional Officer

Current First Aid and CPR C Certificate\*

An updated resume\*

\*Note: Credit will be given for First Aid and CPR FAID101 and for Job Preparation Skills CORR 245 when requirements for Diploma are complete.

### A. Credit for CORE Training (Correctional Services Canada)-prior to 2008

CLTR 120	Diversity
COMM 112	Interpersonal Competence
SPSY 124	Professionalism & Ethics in Corrections
CORR 179	Offender Supervision
CORR 240	Institutional Corrections
EMPS 240	Workplace Wellness
HLTH 120	Communicable Diseases
NAST 120	Aboriginal Studies (may require top up if no other training has been taken)
SPSY 240	Workplace Harassment Prevention
SPSY 123	Suicide Intervention
LERN 140	Academic Management – will be waived

### B. Credit based on Verification of Skills and CORE Training

CORR 175	Introduction to Corrections
PRAC 123	Institutional Work Experience
PRAC 123	Corrections Work Experience
CORR 241	Security Foundations
CORR 242	Elements of Security
CORR 243	Major Incidents
CORR 184	Introduction to Case Management
COMM 119	Writing Skills

CORR 183 Correctional Reporting Procedures  
 COMM 227 Interviewing

**C. Additional optional Federal corrections training PLAR**

CSC Training	SIAST
IMOF1 Effective Presentation Skills	COMM 224 Presentation Skills
Women Centered Training	CORR 177 Women in Corrections
PROG1 Sex Offenders	CORR 171 Sex Offenders
CMO2 Parole Officer Orientation	CORR 185 Managing the Offender Case Plan CORR 186 Offender Release and Community

**D. PLAR evaluation for remaining courses**

Candidates who have completed additional training and experience will be assessed individually for additional credit. Please see the information in this guide for the remaining classes in the diploma.

**E. Credit for CORE Training (Correctional Services Canada 2008-present)**

CLTR 120 Diversity  
 COMM 112 Interpersonal Competence  
 CORR 163 Conflict Resolution Strategies  
 CORR 167 Criminal Justice System  
 CORR 175 Introduction to Corrections  
 CORR 179 Offender Supervision  
 CORR 184 Introduction to Case Management  
 CORR 240 Institutional Corrections  
 EMPS 240 Workplace Wellness  
 HLTH 120 Communicable Diseases  
 LERN 140 Academic Management – will be waived  
 NAST 120 Aboriginal Studies (may require top up if no other training has been taken)  
 SPSY 240 Workplace Harassment Prevention  
 SPSY 123 Suicide Intervention  
 SPSY 124 Ethics  
 SPSY 241 Family Violence  
 SPSY 121 Addictions

## F. Credit based on Verification of Skills and CORE Training

CORR 175	Introduction to Corrections
PRAC 123	Institutional Work Experience
PRAC 123	Corrections Work Experience
CORR 241	Security Foundations
CORR 242	Elements of Security
CORR 243	Major Incidents
COMM 119	Writing Skills
CORR 183	Correctional Reporting Procedures
COMM 227	Interviewing

## G. Additional optional Federal corrections training PLAR

CSC Training	SIAST
IMOF1 Effective Presentation Skills	COMM 224 Presentation Skills
Women Centered Training	CORR 177 Women in Corrections
PROG1 Sex Offenders	CORR 171 Sex Offenders
CMO2 Parole Officer Orientation	CORR 185 Managing the Offender Case Plan CORR 186 Offender Release and Community
NATIVE 1 in Conjunction with CORE Training	NAST 120 Aboriginal Studies

## H. PLAR evaluation for remaining courses

Candidates who have completed additional training and experience will be assessed individually for additional credit. Please see the information in this guide for the remaining classes in the diploma.

**A. Credit granted for ITP and Statement of Achievement training 1993-2001**

COMM 112	Interpersonal Competence
SPSY 124	Professionalism and Ethics in Corrections
CORR 179	Offender Supervision
HLTH 120	Communicable Diseases
EMPS 240	Workplace Wellness
LERN 140	Academic Management - will be waived

**B. Credit based on Verification of Skills and ITP training and Applied Certificate Training**

CORR 175	Introduction to Corrections
Work 123	Institutional Work Experience
Work 124	Corrections Work Experience
CORR 241	Security Foundations
CORR 242	Elements of Security
CORR 243	Major Incidents
COMM 119	Writing Skills
CORR 183	Correctional Reporting Procedures
COMM 227	Interviewing
CORR 240	Institutional Corrections
CORR 184	Introduction to Case Management

**C. Additional training and experience**

Candidates who have completed additional training and experience will be assessed individually for additional credit. Please see the information in this guide for the remaining classes in the diploma.

**Diploma Level Certification for Provincial Correctional Officers**

**Training Between 1993 and 2001**

In order to be eligible for Diploma Level Certification, individuals must provide the following documentation:

Verification of a minimum of three years of experience as a Correctional Officer

Current First Aid and CPR C Certificate\*

An updated resume\*

\*Note: Credit will be given for First Aid and CPR FAID101 and for Job Preparation Skills CORR 245 when requirements for Diploma are complete.

**A. Credit granted for ITP and Statement of Achievement training 1993-2001**

COMM 112	Interpersonal Competence
SPSY 124	Ethics
CORR 179	Offender Supervision

- HLTH 120 Communicable Diseases
- EMPS 240 Workplace Wellness
- LERN 140 Academic Management will be waived

**B. Credit based on verification of skills and ITP training and Applied Certificate training**

- CORR 175 Introduction to Corrections
- PRAC 123 Institutional Experience
- PRAC 123 Corrections Work Experience
- CORR 241 Security Foundations
- CORR 242 Elements of Security
- CORR 243 Major Incidents
- COMM 119 Writing Skills – may require completion of research essay
- CORR 183 Correctional Reporting Procedures
- COMM 227 Interviewing
- CORR 240 Institutional Corrections
- CORR 184 Introduction to Case Management

**C. Additional optional Provincial training PLAR**

Provincial Training	SIAST
Interest based conflict resolution – minimum of three day workshop	CORR 163 Conflict Negotiation Skills
Harassment training – minimum of two day workshop	SPSY 240 Workplace Harassment Prevention

**D. PLAR evaluation for remaining courses**

**E. Additional training and experience**

Candidates who have completed additional training and experience will be assessed individually for additional credit. Please see the information in this guide for the remaining classes in the diploma.

## Diploma Level Certification for Provincial Correctional Officers

### Training after 2001

In order to be eligible for Diploma Level Certification, individuals must provide the following documentation:

Verification of a minimum of three years of experience as a Correctional Officer

Current First Aid and CPR C Certificate\*

An updated resume\*

\*Note: Credit will be given for First Aid and CPR FAID101 and for Job Preparation Skills CORR 245 when requirements for Diploma are complete.

#### A. Credit granted for ITP and Applied Certificate Training (2001-present)

CLTR 120	Diversity
COMM 112	Interpersonal Competence
SPSY 124	Ethics
CORR 179	Offender Supervision
HLTH 120	Communicable Diseases
SPSY 121	Addictions – will require top up
SPSY 123	Suicide Intervention
SPSY 241	Family Violence – will require top up
EMPS 240	Workplace Wellness
LEGL 161	Restorative Justice – will require top up
LERN 140	Academic Management will be waived

#### B. Credit based on Verification of Skills and ITP Training and Applied Certificate Training

CORR 175	Introduction to Corrections
PRAC 123	Institutional Work Experience
PRAC 123	Corrections Work Experience
CORR 241	Security Foundations
CORR 242	Elements of Security
CORR 243	Major Incidents
COMM 119	Writing Skills – may require completion of research essay
CORR 173	Correctional Reporting Procedures
COMM 227	Interviewing
CORR 240	Institutional Corrections
CORR 184	Introduction to Case Management
CORR 185	Managing the Offender Case Plan
CORR 186	Offender Release and Community Supervision

### C. Additional optional Provincial training PLAR

Provincial Training	SIAST
Interest based conflict resolution – minimum of three day workshop	CORR 163 Conflict Negotiation Skills
Harassment training – minimum of two day workshop	SPSY 240 Workplace Harassment Prevention

### D. PLAR evaluation for remaining courses

### E. Additional training and experience

Candidates who have completed additional training and experience will be assessed individually for additional credit. Please see the information in this guide for the remaining classes in the diploma.

### How many courses can be challenged through PLAR in the Correctional Studies program?

There is no limit. You may challenge as many of these courses as you are able to prove prior skills and knowledge through assessment.

### Which courses are PLAR-ready?

Correctional Studies program profile			
Course code	Course name	PLAR challenge(s) available through program	PLAR challenge(s) not available
<b>Year 1</b>			
CLTR 120	Diversity	√	
COMM 112	Interpersonal Communication	√	
COMM 119	Writing Skills	√	
COMM 202	Conflict Resolution Strategies	√	
COMM 224	Presentation Skills	√	
COMM 227	Interviewing	√	
CORR 134	Abnormal Behaviour	√	
CORR 135	Criminology	√	

Correctional Studies program profile			
Course code	Course name	PLAR challenge(s) available through program	PLAR challenge(s) not available
CORR 167	Criminal Justice System	√	
CORR 175	Introduction to Corrections	√	
CORR 176	Youth Justice	√	
CORR 177	Women in Corrections	√	
HLTH 120	Communicable Diseases	√	
HUMD 142	Lifespan Issues	√	
LAW 162	Criminal Law	√	
LEGL 161	Restorative Justice	√	
LERN 140	Academic Management for Corrections	√	
NAST 120	Aboriginal Studies	√	
PERS 142	Personal Wellness	√	
SPSY 123	Suicide Intervention	√	
SPSY 124	Professionalism and Ethics in Corrections	√	
SPSY 240	Workplace Harassment Prevention	√	
Year 2			
CORR 158	Sex Offenders	√	
CORR 179	Offender Supervision	√	
CORR 183	Correctional Reporting Procedures	√	
CORR 184	Introduction to Case Management	√	
CORR 185	Managing the Offender Case Plan	√	
CORR 186	Offender Release and Community	√	
CORR 187	Violent Offenders	√	
CORR 188	Program Planning and Delivery	√	
CORR 240	Institutional Corrections	√	
CORR 241	Security Foundations	√	
CORR 242	Elements of Security	√	
CORR 243	Major Incidents	√	
CORR 245	Job Preparation	√	

Correctional Studies program profile			
Course code	Course name	PLAR challenge(s) available through program	PLAR challenge(s) not available
EMPS 240	Workplace Wellness	✓	
SPSY 121	Addictions	✓	
SPSY 241	Family Violence	✓	
WORK 123	Corrections Institutional Work Experience	✓	
WORK 124	Corrections Work Experience	✓	

\*Note\*: Some courses common to multiple programs at SIAST (i.e. computers, communications, math, and sciences) are managed by associated studies faculty. To see if these shared courses in your program are PLAR-ready, visit the “Courses Common to Multiple Programs” link on the [PLAR homepage](#) for further details.

For assistance call SIAST and ask to speak to the PLAR advisor/[counsellor](#) assigned to the Correctional Studies program at: 1-866-467-4278 or 1-866-goSIAST.

### **Is PLAR available at any time of the year?**

PLAR challenges are currently available from Sept through June. No assessments are completed in July and August.

### **Is it *easier* to challenge a course through PLAR - OR - take the course?**

Neither is easier. By using PLAR you may reduce the repetition of studying information that you already know. The PLAR process allows you to demonstrate knowledge you already have.

PLAR is not an easy way to certification, rather a “different” way to obtain certification. Your personal level of skill and experience will dictate which courses you choose to challenge. The self-audit section found later in this guide will help you decide if you have a good match of skill and knowledge for a specific course.

### **Methods of assessing prior learning**

Assessment methods measure an individual’s learning against course learning outcomes. The assessment methods listed below are the ones most commonly used, but other forms of flexible assessment may be considered. These assessments may include one or a combination of the following assessment tools:

- product validation & assessment
- challenge exam
- standardized tests

- performance evaluations (including skill demonstrations, role plays, clinical applications, case studies)
- interviews and oral exams
- equivalency (evaluations of learning from non-credit training providers)
- evidence or personal documentation files (providing evidence of learning from life and work experiences and accomplishments)

### **If I live out of town, do I have to travel to a main campus to do PLAR?**

There will be times that you will need to meet with the program on campus. However, we will try to keep travel to a minimum.

### **What if I have a disability & need equity accommodations?**

At SIAST, we understand that sometimes services must be provided to students in a variety of ways to achieve the goals of fair representation. Therefore, the range of services provided for Education Equity students is as diverse as the needs of those students. We strive for equity (not uniformity) and provide varied services for students with differing needs. If more information is required, please contact a SIAST counsellor at a campus closest to you or refer to the SIAST Web site: [http://www.siastr.sk.ca/stuservices/advising\\_counselling.shtml](http://www.siastr.sk.ca/stuservices/advising_counselling.shtml)

### **Are there other methods to gain SIAST course credits for prior learning?**

#### **Transfer Credit**

Yes, SIAST will grant credit for previous training that is similar in content, objectives, and evaluation standards to SIAST training. Transfer of credit is different from the PLAR process. Transfer Credit guidelines may be found at:

[http://www.siastr.sk.ca/stuservices/plar/transfer\\_credit.shtml](http://www.siastr.sk.ca/stuservices/plar/transfer_credit.shtml)

It is the student's responsibility to check with [Registration Services](#) for specific campus procedures on this policy. For specific information and guidelines regarding transfer of credit, contact a [SIAST educational counsellor](#).

The Correctional Studies Program currently has an articulation agreement with the Correctional Studies program at Lethbridge College. Please check with the faculty advisor for transfer of credit for individual courses

**An online provincial transfer credit guide is now available at [www.saskcat.ca](http://www.saskcat.ca)**

**Note:** *If you are a recent high school graduate, check the Saskatchewan Learning Web site for any articulated agreements that may apply for Computer Courses or Practical and Applied Arts Courses.*

[SaskLearning Credit Transfer Guide](#)

[SaskLearning website](#)

## Contact us

---

If more information is required, please contact a designated PLAR counsellor at a campus closest to you.

**Kelsey Campus, Saskatoon, SK**

1-866-goSIAST or 1-866-467-4278

**Palliser Campus, Moose Jaw, SK**

1-866-goSIAST or 1-866-467-4278

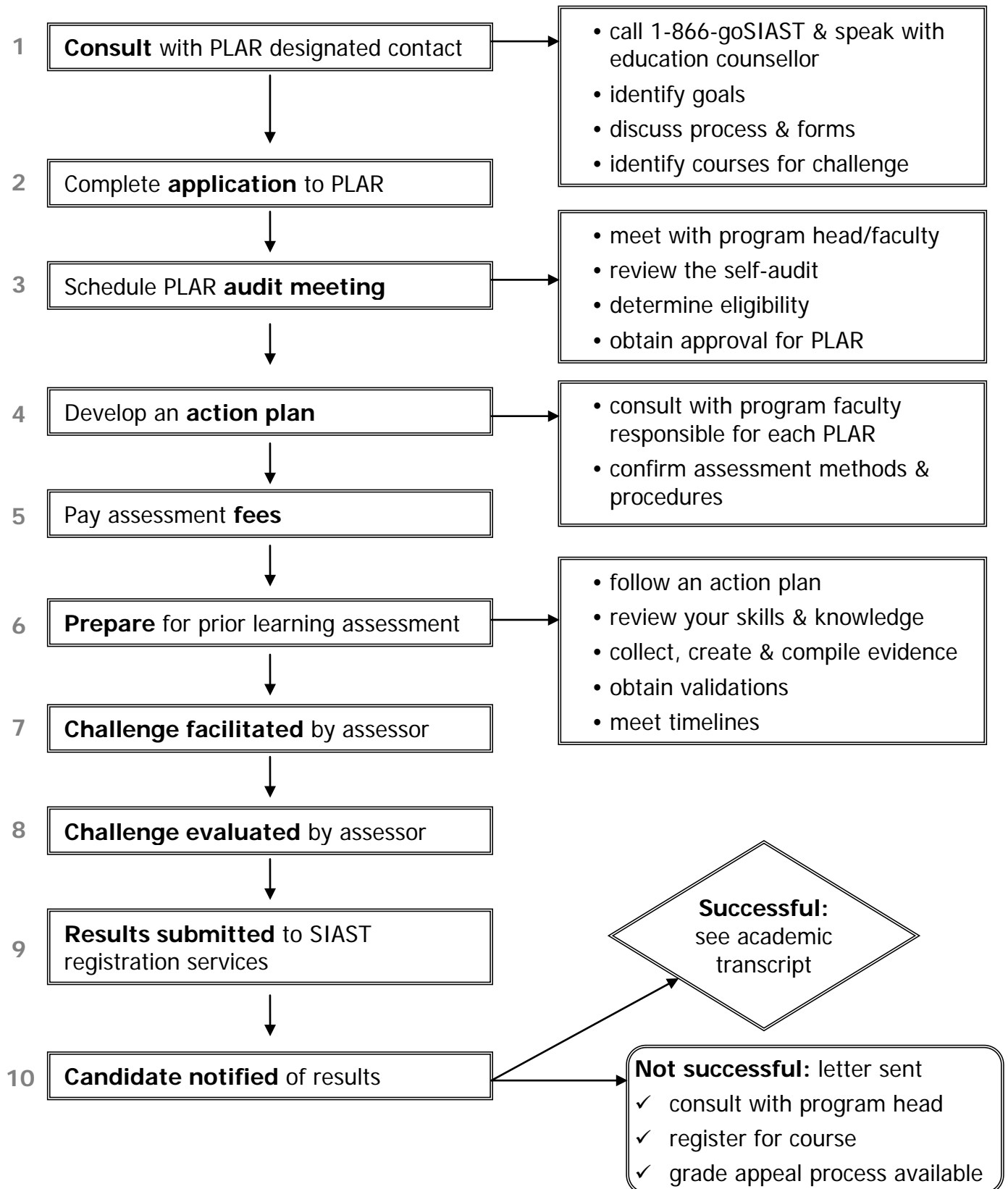
**Wascana Campus, Regina, SK**

1-866-goSIAST or 1-866-467-4278

**Woodland Campus, Prince Albert, SK**

1-866-goSIAST or 1-866-467-4278

## Prior Learning Assessment and Recognition process



## Guiding principles for developing a PLAR evidence file

---

1. As you begin the PLAR process you will be advised if any evidence is required. This will be identified in your [action plan](#). Check with the PLAR designated contact **before** you begin to gather evidence.
2. Evidence must be valid and relevant. Your evidence must match the learning outcomes identified for each course.
  - It is your responsibility to create, collect and compile relevant evidence – if required.
3. Learning must be current, which in this program, typically means within the last five years.
4. The evidence should demonstrate the skills and knowledge from your experiences.
5. The learning must have both a theoretical and practical component.

## Types of evidence

---

There are three types of evidence used to support your PLAR request:

1. Direct evidence – what you can demonstrate for yourself.
2. Indirect evidence – what others say or observe about you.
3. Self-evidence – what you say about your knowledge and experience.

Ensure that you provide full evidence to your Correctional Studies faculty assessor so that your prior learning application is assessed appropriately. Well organized, easy to track evidence will also ensure that none of the evidence is missed or assessed incorrectly.

Here are some examples of evidence that you may be requested to submit as part of your evidence file (if required):

- written descriptions and analysis
- course outline of any work place training
- philosophy statement
- observation and case management reports
- workplace validations
- work samples
- videotapes

All documents that are submitted to SIAST may be returned to the student after the final results have been given and the grade appeal deadline of seven days has passed. A copy of transcripts and certificates may be included in your evidence file, but be prepared to show original documents at the PLAR audit meeting for validation.

## How long will it take to prepare evidence for PLAR?

---

Since the requirements are different for each course, and each candidate has different experiences, the amount of time it takes to prepare your evidence will vary.

## Steps to complete a self-audit

---

1. Read through the levels of competence as listed below.

<b>Mastery:</b>	I am able to demonstrate the learning outcome well enough to teach it to someone else.
<b>Competent:</b>	I can work independently to apply the learning outcome.
<b>Functional:</b>	I need some assistance in using the outcome.
<b>Learning:</b>	I am developing skills and knowledge for this area.
<b>None:</b>	I have no experience with the outcome.

### Learning outcomes

For each learning outcome listed, please self-evaluate your competency levels and record in the appropriate column for each self-audit.

2. Take a few minutes and read through the following self-audit for each course you are interested in as a PLAR candidate.
3. Check your level of competence as you read through each of the learning outcomes for each course. The information will help you in your decision to continue with your PLAR application.
4. In order to be successful in a PLAR assessment, your abilities must be at the competent or mastery level for the majority of the learning outcomes. Some things to consider when determining your level of competence are:
  - How do I currently use this outcome?
  - What previous training have I had in this outcome: workshops, courses, on-the-job?
  - What personal development or volunteer experience do I have in this area?

Be prepared to explain the reason you chose this level if asked by an assessor.

5. Bring the completed self-audit to a consultation meeting with the program head or faculty member in [step 3 – PLAR process](#) of the candidate process for prior learning assessment.

## Self-audit guide(s)

### Year 1

#### CLTR 120 - Diversity

You will examine the elements of cultural diversity in the workplace. You will examine perspectives of personal, historical and cultural backgrounds of yourself and others. You will also examine racism and issues of power.

**Credit unit(s):** 3.0

**Equivalent course(s):** none

CLTR 120 - Diversity <b>Mastery:</b> I am able to demonstrate it well enough to teach it to someone else. <b>Competent:</b> I can work independently to apply the outcome. <b>None:</b> I have no experience with the outcome.	Mastery	Competent	None
1. Examine the diverse Canadian identity.			
2. Examine human rights and freedoms in Canada.			
3. Respect the race, ethnicity, and culture of others.			
4. Examine diverse religions and spiritual beliefs.			
5. Examine the experiences of people with disabilities.			
6. Examine issues relating to gender.			
7. Examine sexual orientation.			
8. Describe family diversity.			
9. Describe social inequality in Canada.			

### PLAR assessment methods

If you qualify for PLAR, you may be asked to demonstrate your learning in one or more of the following ways. Be prepared to discuss the expectations during a consultation meeting.

#### 1. Evidence file

A copy of the employer validation checklist must accompany the evidence file and verify training and skills acquired during the course of employment

## 2. Challenge exam/assignment

Complete a comprehensive assignment that analyzes the candidates experience in dealing with a diverse population

## 3. Structured interview

Complete a structured interview that addresses the learning outcomes in this course

## Resources

Candidates may find the following resource useful in preparing their PLAR challenge:

1. Boyington, Roberts, Kazarian. (2008). *Diversity and First Nations Issues in Canada*

**Note:** The Correctional Studies program operates a group website that contains current course materials and links to relevant resources. Once a candidate has applied and been accepted into the program, the candidate will be granted access to the website.

## COMM 112 – Interpersonal Competence

You will focus on developing basic communication skills including effective listening and responding skills, trust building, verbal and nonverbal communication. You will also examine the role of self-concept in effective communication.

**Credit unit(s):** 2.0

**Equivalent course(s):** none

<b>COMM 112 – Interpersonal Competence</b> <b>Mastery:</b> I am able to demonstrate it well enough to teach it to someone else. <b>Competent:</b> I can work independently to apply the outcome. <b>None:</b> I have no experience with the outcome.	Mastery	Competent	None
1. Examine the foundation of interpersonal competence.			
2. Examine the role of self-concept in interpersonal competence.			
3. Use strategies for effective listening and responding.			
4. Use strategies for effective verbal communication.			
5. Examine elements of non-verbal communication.			
6. Demonstrate effective interpersonal communication skills.			

### PLAR assessment methods

If you qualify for PLAR, you may be asked to demonstrate your learning in one or more of the following ways. Be prepared to discuss the expectations during a consultation meeting.

#### 1. Evidence file

A copy of the employer validation checklist must accompany the evidence file and verify training and skills acquired during the course of employment.

#### 2. Demonstration

Candidates may be required to submit a videotape that demonstrates skills in learning outcomes 3, 4, and 6.

#### 3. Journal

Candidates may be required to complete a journal that addresses learning outcomes 1, 2 and 5.

### Resources

Candidates may find the following resources useful in preparing their PLAR challenge:

1. Greenick & McGruthers. Interpersonal Group Skills for Law Enforcement

**Note:** The Correctional Studies program operates a group website that contains current course materials and links to relevant resources. Once a candidate has applied and been accepted into the program, the candidate will be granted access to the website.

## COMM 119 – Writing Skills

You will practice a variety of written communication styles. You will receive information on basic grammar and the mechanics of writing. You will do research and create a research essay. Additionally you will develop a professional portfolio.

**Credit unit(s):** 3.0

**Prerequisite(s):** none

<b>COMM 119 – Writing Skills</b> <b>Mastery:</b> I am able to demonstrate it well enough to teach it to someone else. <b>Competent:</b> I can work independently to apply the outcome. <b>None:</b> I have no experience with the outcome.	Mastery	Competent	None
1. Apply the structure of written communication.			
2. Demonstrate proper use of grammar and punctuation.			
3. Prepare for essay writing.			
4. Complete a research essay using American Psychological Association (APA) formatting rules.			
5. Create a variety of reports/forms.			
6. Develop a professional portfolio.			

### PLAR assessment methods

If you qualify for PLAR, you may be asked to demonstrate your learning in one or more of the following ways. Be prepared to discuss the expectations during a consultation meeting.

#### 1. Evidence file

Requirements for evidence file:

- A professional portfolio including pertinent information within these categories:
  - Resume; Community Development; Awards, Certificates; Professional Development Supervision and evaluation documents; initiatives and special projects; personal interests.
- A research essay utilizing APA format that has a minimum of seven hundred and fifty words.

#### 2. Challenge exam

Complete a comprehensive challenge exam on the rules of grammar.

## Resources

Candidates may find the following resource useful in preparing their PLAR challenge:

1. Norton/Green. *The Bare Essentials: Form A*. (any edition)

**Note:** The Correctional Studies program operates a group website that contains current course materials and links to relevant resources. Once a candidate has applied and been accepted into the program, the candidate will be granted access to the website.

## COMM 202 – Conflict Resolution Strategies

You will develop assertiveness skills and apply them to situations requiring problem solving and conflict resolution.

**Credit unit(s):** 3.0

**Prerequisite(s):** none

<b>COMM 202 – Conflict Resolution Strategies</b> <b>Mastery:</b> I am able to demonstrate it well enough to teach it to someone else. <b>Competent:</b> I can work independently to apply the outcome. <b>None:</b> I have no experience with the outcome.	Mastery	Competent	None
1. Describe assertive behaviour.			
2. Demonstrate assertive behaviour in an academic setting.			
3. Describe models of problem solving.			
4. Apply problem solving skills.			
5. Describe conflict resolution strategies.			
6. Apply conflict resolution strategies.			

### PLAR assessment methods

If you qualify for PLAR, you may be asked to demonstrate your learning in one or more of the following ways. Be prepared to discuss the expectations during a consultation meeting.

#### 1. Evidence file

A copy of the employer validation checklist must accompany the evidence file and verify training and skills acquired during the course of employment.

- Candidates who have completed 40 hours of mediation training will be granted PLAR for this course.

#### 2. Challenge exam/assignment

Candidates may be required to complete a series of case studies that address the learning outcomes in this course.

#### 3. Demonstration

Candidates may be required to submit a videotape that demonstrates skills in learning outcomes 1 to 6.

### Resources

**Note:** The Correctional Studies program operates a group website that contains current course materials and links to relevant resources. Once a candidate has applied and been accepted into the program, the candidate will be granted access to the website.

## COMM 224 – Presentation Skills

You will learn the basics of effective presentation skills and have the opportunity to deliver a group presentation.

**Credit unit(s):** 2.0

**Prerequisite(s):** none

COMM 224 – Presentation Skills	Mastery	Competent	None
<b>Mastery:</b> I am able to demonstrate it well enough to teach it to someone else.			
<b>Competent:</b> I can work independently to apply the outcome.			
<b>None:</b> I have no experience with the outcome.			
1. Describe the role of effective public speaking in controlled settings.			
2. Describe key elements of presentation skills and their application.			
3. Prepare a presentation.			
4. Demonstrate presentation skills.			

### PLAR assessment methods

If you qualify for PLAR, you may be asked to demonstrate your learning in one or more of the following ways. Be prepared to discuss the expectations during a consultation meeting.

#### 1. Evidence file

The PLAR candidate will submit an evidence file that contains documentation verifying the delivery of a minimum of three presentations, each one twenty minutes in length.

#### 2. Demonstration

The candidate will submit a twenty minute presentation delivered to an audience of colleagues, parents or peers, utilizing PowerPoint as part of the presentation.

- this must be submitted using DVD or CD ROM
- audience handout to accompany presentation

### Resources

**Note:** The Correctional Studies program operates a group website that contains current course materials and links to relevant resources. Once a candidate has applied and been accepted into the program, the candidate will be granted access to the website.

## COMM 227 – Interviewing

You will review and apply the skills necessary to conduct effective interviews in law enforcement settings.

**Credit unit(s):** 2.0

**Prerequisite(s):** none

<b>COMM 227 – Interviewing</b>	<b>Mastery</b>	<b>Competent</b>	<b>None</b>
<b>Mastery:</b> I am able to demonstrate it well enough to teach it to someone else.			
<b>Competent:</b> I can work independently to apply the outcome.			
<b>None:</b> I have no experience with the outcome.			
1. Identify categories of interviews.			
2. Describe the elements of change.			
3. Describe basic interview principles.			
4. Apply interview skills.			

## PLAR assessment methods

If you qualify for PLAR, you may be asked to demonstrate your learning in one or more of the following ways. Be prepared to discuss the expectations during a consultation meeting.

### 1. Evidence file

A copy of the employer validation checklist must accompany the evidence file and verify training and skills acquired during the course of employment. These will include:

- description of agency and client group
- situation in which candidate utilizes motivational interviewing
- estimate number of hours that the candidate has utilizes motivational interviewing
- evaluation of skills related to learning outcomes

### 2. Demonstration

The candidate will submit a thirty minute individual interview session demonstrating the stages of motivational interviewing. This must be submitted using DVD or CD.

## Resources

**Note:** The Correctional Studies program operates a group website that contains current course materials and links to relevant resources. Once a candidate has applied and been accepted into the program, the candidate will be granted access to the website.

## CORR 134 – Abnormal Behaviour

You will compare general information on abnormal behaviour to the theories on the causes of abnormal behaviour and explore current treatment options.

**Credit unit(s):** 4.0

**Prerequisite(s):** none

<b>CORR 134 – Abnormal Behaviour</b> <b>Mastery:</b> I am able to demonstrate it well enough to teach it to someone else. <b>Competent:</b> I can work independently to apply the outcome. <b>None:</b> I have no experience with the outcome.	Mastery	Competent	None
1. Describe concepts explaining abnormal behaviour.			
2. Discuss theoretical perspectives explaining abnormal behaviour.			
3. Recognize emotional disorders.			
4. Recognize behavioural disorders.			
5. Recognize schizophrenia and neuropsychological disorders.			
6. Recognize developmental disorders.			
7. Discuss current intervention strategies in the management of special needs offenders.			

### PLAR assessment methods

If you qualify for PLAR, you may be asked to demonstrate your learning in one or more of the following ways. Be prepared to discuss the expectations during a consultation meeting.

#### 1. Challenge exam/assignment

- Candidates will be required to complete 5 multiple choice challenge exams that address the learning outcomes in this course

**OR**

- Candidates will be required to complete a comprehensive multiple choice exam that addresses the learning outcomes in this course

### Resources

Candidates may find the following resource useful in preparing their PLAR challenge:

1. Nevid, Greene, Johnson, Taylor. *Essentials of Abnormal Psychology in a Changing World*.

**Note:** The Correctional Studies program operates a group website that contains current course materials and links to relevant resources. Once a candidate has applied and been accepted into the program, the candidate will be granted access to the website.

## CORR 135 – Criminology

You will study theories relating to the causes of crime and criminology. You will apply the theories to specific situations and analyze the various methods of social control. The sex trade will be studied in detail.

**Credit unit(s):** 3.0

**Prerequisite(s):** none

<b>CORR 135 – Criminology</b> <b>Mastery:</b> I am able to demonstrate it well enough to teach it to someone else. <b>Competent:</b> I can work independently to apply the outcome. <b>None:</b> I have no experience with the outcome.	Mastery	Competent	None
1. Describe concepts of crime, law and criminology.			
2. Discuss the criminological enterprise.			
3. Describe theories of crime causation.			
4. Identify crime typology.			
5. Discuss the sex trade.			
6. Analyze methods of social control.			

### PLAR assessment methods

If you qualify for PLAR, you may be asked to demonstrate your learning in one or more of the following ways. Be prepared to discuss the expectations during a consultation meeting.

#### 1. Challenge exam/assignment

- Candidates will be required to complete 4 challenge unit exams that address the learning outcomes in this course, **OR**
- Candidates will be required to complete a comprehensive exam that addresses the learning outcomes in this course, **AND**
- Candidates will be required to complete an assignment that applies the theory in this course to a specific case study.

### Resources

Candidates may find the following resource useful in preparing their PLAR challenge:

1. Siegel, Brown and Hoffman. *Criminology: The Core*

**Note:** The Correctional Studies program operates a group website that contains current course materials and links to relevant resources. Once a candidate has applied and been accepted into the program, the candidate will be granted access to the website.

## CORR 167 – Criminal Justice System

You will examine the components of the criminal justice system. You will examine how the components work together to respond to crime and crime control.

**Credit unit(s):** 3.0

**Prerequisite(s):** none

**Equivalent course(s):** YCW 187

<b>CORR 167 – Criminal Justice System</b> <b>Mastery:</b> I am able to demonstrate it well enough to teach it to someone else. <b>Competent:</b> I can work independently to apply the outcome. <b>None:</b> I have no experience with the outcome.	Mastery	Competent	None
1. Examine the components of the criminal justice system.			
2. Analyze the socio-political elements of crime control.			
3. Analyze the role of the police.			
4. Analyze the role of the courts.			
5. Describe the role of correctional institutions and community release options.			

## PLAR assessment methods

If you qualify for PLAR, you may be asked to demonstrate your learning in one or more of the following ways. Be prepared to discuss the expectations during a consultation meeting.

### 1. Evidence file

A copy of the employer validation checklist must accompany the evidence file and verify training and skills acquired during the course of employment.

### 2. Challenge exam/assignment

Candidates may be required to complete a comprehensive exam that addresses the learning outcomes in this course.

## Resources

Candidates may find the following resource useful in preparing their PLAR challenge:

1. Griffiths, Curt T. *Canadian Criminal Justice: A Primer*. Third Edition

**Note:** The Correctional Studies program operates a group website that contains current course materials and links to relevant resources. Once a candidate has applied and been accepted into the program, the candidate will be granted access to the website.

## CORR 175 – Introduction to Corrections

You will be introduced to the organizational structures of federal and provincial correctional systems. You will study the historical development of prisons in Canada. In this course you will also have an opportunity to tour federal and provincial correctional institutions.

**Credit unit(s):** 2.0

**Prerequisite(s):** none

<b>CORR 175 – Introduction to Corrections</b> <b>Mastery:</b> I am able to demonstrate it well enough to teach it to someone else. <b>Competent:</b> I can work independently to apply the outcome. <b>None:</b> I have no experience with the outcome.	Mastery	Competent	None
1. Examine the historical development of prisons in Canada.			
2. Examine federal and provincial organizational structures.			
3. Describe elements of the provincial prison environment.			
4. Describe elements of the federal prison environment.			

### PLAR assessment methods

If you qualify for PLAR, you may be asked to demonstrate your learning in one or more of the following ways. Be prepared to discuss the expectations during a consultation meeting.

#### 1. Evidence file

Candidate will be required to provide evidence that he/she has toured both a federal and provincial adult correctional facility.

#### 2. Challenge exam/assignment

Candidate will be required to complete an assignment that addresses the historical development of prisons in Canada.

### Resources

**Note:** The Correctional Studies program operates a group website that contains current course materials and links to relevant resources. Once a candidate has applied and been accepted into the program, the candidate will be granted access to the website.

## CORR 176 – Youth Justice

You will review young offender legislation and examine Saskatchewan's model for managing young offenders. You will discuss trends in approaches to youth justice and also examine specific programs delivered in Saskatchewan.

**Credit unit(s):** 2.0

**Prerequisite(s):** none

**Equivalent course(s):** SOCI 184

<b>CORR 176 – Youth Justice</b> <b>Mastery:</b> I am able to demonstrate it well enough to teach it to someone else. <b>Competent:</b> I can work independently to apply the outcome. <b>None:</b> I have no experience with the outcome.	Mastery	Competent	None
1. Examine the historical roots of youth justice.			
2. Examine legislation governing youth justice.			
3. Describe youth justice programs in Saskatchewan.			
4. Discuss current issues affecting young offenders.			

## PLAR assessment methods

If you qualify for PLAR, you may be asked to demonstrate your learning in one or more of the following ways. Be prepared to discuss the expectations during a consultation meeting.

### 1. Evidence file

A copy of the employer validation checklist must accompany the evidence file and verify training and skills acquired during the course of employment typically in a facility for young offenders.

### 2. Challenge exam/assignment

Candidates may be required to complete a comprehensive exam that addresses the learning outcomes in this course.

### 3. Structured interview

Complete a structured interview that addresses the learning outcomes in this course.

## Resources

Candidates may find the following resource useful in preparing their PLAR challenge:

1. Olivo, Cotter and Bromwich. *Youth and the Law*

**Note:** The Correctional Studies program operates a group website that contains current course materials and links to relevant resources. Once a candidate has applied and been accepted into the program, the candidate will be granted access to the website.

## CORR 177 – Women in Corrections

You will explore the historical roots of incarcerated women in Canada. Your studies will include studying gender issues in correctional programming, institutional initiatives for female offenders, and gender issues for female correctional staff.

**Credit unit(s):** 2.0

**Prerequisite(s):** none

<b>CORR 177 – Women in Corrections</b> <b>Mastery:</b> I am able to demonstrate it well enough to teach it to someone else. <b>Competent:</b> I can work independently to apply the outcome. <b>None:</b> I have no experience with the outcome.	Mastery	Competent	None
1. Examine the historical roots of incarcerating women.			
2. Identify historical policies affecting care and treatment of incarcerated women.			
3. Describe the demographic profile of incarcerated women.			
4. Describe institutional programs for incarcerated women.			
5. Examine gender issues for female correctional staff.			

### PLAR assessment methods

If you qualify for PLAR, you may be asked to demonstrate your learning in one or more of the following ways. Be prepared to discuss the expectations during a consultation meeting.

#### 1. Evidence file

A copy of the employer validation checklist must accompany the evidence file and verify training and skills acquired during the course of employment typically in an agency that provides services to women in conflict with the law.

#### 2. Challenge exam/assignment

Candidates may be required to complete a comprehensive exam that addresses the learning outcomes in this course.

#### 3. Structured interview

Candidates may be required complete a structured interview that addresses the learning outcomes in this course.

### Resources

**Note:** The Correctional Studies program operates a group website that contains current course materials and links to relevant resources. Once a candidate has applied and been accepted into the program, the candidate will be granted access to the website.

## HLTH 120 – Communicable Diseases

You will examine the profiles of common communicable diseases both in the community and in institutional settings. You will practice specific prevention strategies.

**Credit unit(s):** 2.0

**Prerequisite(s):** CORR 134 minimum grade of 60 and CORR 164 minimum grade of 60

**Equivalent course(s):** SPCR 180

HLTH 120 – Communicable Diseases	Mastery	Competent	None
<b>Mastery:</b> I am able to demonstrate it well enough to teach it to someone else.			
<b>Competent:</b> I can work independently to apply the outcome.			
<b>None:</b> I have no experience with the outcome.			
1. Examine the public health communicable disease profile.			
2. Examine the communicable disease profiles in institutions.			
3. Describe universal blood and body fluid precautions.			
4. Apply communicable disease prevention measures.			

### PLAR assessment methods

If you qualify for PLAR, you may be asked to demonstrate your learning in one or more of the following ways. Be prepared to discuss the expectations during a consultation meeting.

#### 1. Evidence file

A copy of the employer validation checklist must accompany the evidence file and verify training and skills acquired during the course of employment.

- These must include: training in hand washing, needle disposal and proper use and disposal of gloves.

#### 2. Challenge exam

Candidates may be required to complete a challenge exam that addresses the learning outcomes in this course.

#### 3. Demonstration

Candidates may be required to demonstrate hand washing, needle disposal and proper use and disposal of gloves.

### Resources

Candidates may find the following resource useful in preparing their PLAR challenge:

1. HLTH 120 course information is available online.

**Note:** The Correctional Studies program operates a group website that contains current course materials and links to relevant resources. Once a candidate has applied and been accepted into the program, the candidate will be granted access to the website.

## HUMD 142 – Lifespan Issues

You will examine human development across the lifespan. Your studies will focus on developmental factors throughout a person's life that impact on the choices that they make.

**Credit unit(s):** 3.0

**Prerequisite(s):** none

**Equivalent course(s):** HUMD 186, HUMD 280

<b>HUMD 142 – Lifespan Issues</b> <b>Mastery:</b> I am able to demonstrate it well enough to teach it to someone else. <b>Competent:</b> I can work independently to apply the outcome. <b>None:</b> I have no experience with the outcome.	Mastery	Competent	None
1. Discuss the prenatal determinants of human development.			
2. Analyze the factors affecting human development and socialization in childhood.			
3. Analyze the factors affecting human development and socialization in adolescence.			
4. Analyze the factors affecting human development and socialization in early and middle adulthood.			
5. Analyze the factors affecting human development and socialization in late adulthood.			
6. Discuss the process of death and dying.			

### PLAR assessment methods

If you qualify for PLAR, you may be asked to demonstrate your learning in one or more of the following ways. Be prepared to discuss the expectations during a consultation meeting.

#### 1. Challenge exam/assignment

Candidates will be required to complete a take home exam that consists of case studies that address the learning outcomes in the course. Students will also be required to complete a genogram.

#### 2. Structured interview

Candidates may be required to complete a structured interview that addresses the learning outcomes in this course.

### Resources

Candidates may find the following resource useful in preparing their PLAR challenge:

1. Polan/Taylor. *Journey Across the Life Span*

**Note:** The Correctional Studies program operates a group website that contains current course materials and links to relevant resources. Once a candidate has applied and been accepted into the program, the candidate will be granted access to the website

## LAW 162 – Criminal Law

You will examine the Criminal Code and its relationship to selected criminal offenses and cases. You will also examine elements of a crime, pre-trial criminal procedures and the significance of the Charter of Rights and Freedoms as it impacts on criminal law.

**Credit unit(s):** 3.0

**Prerequisite(s):** none

<b>LAW 162 – Criminal Law</b> <b>Mastery:</b> I am able to demonstrate it well enough to teach it to someone else. <b>Competent:</b> I can work independently to apply the outcome. <b>None:</b> I have no experience with the outcome.	Mastery	Competent	None
1. Describe the evolution and development of law in Canada.			
2. Discuss sources of legal rules and interpretations.			
3. Describe the determinants of criminal liability.			
4. Explain pre-trial procedures.			
5. Examine criminal code offences.			
6. Examine provincial statutes.			

### PLAR assessment methods

If you qualify for PLAR, you may be asked to demonstrate your learning in one or more of the following ways. Be prepared to discuss the expectations during a consultation meeting.

#### 1. Challenge exam

Students will be required complete a comprehensive challenge exam that covers the Canadian Criminal Code.

### Resources

Candidates may find the following resources useful in preparing their PLAR challenge:

1. Barnhorst, R. & Barnhorst S, (2004). *Criminal Law and the Canadian Criminal Code* (4<sup>th</sup> Ed.)
2. Pocket Criminal Code

**Note:** The Correctional Studies program operates a group website that contains current course materials and links to relevant resources. Once a candidate has applied and been accepted into the program, the candidate will be granted access to the website.

## LEGL 161 – Restorative Justice

You will examine the concept of restorative justice and explore the current initiatives provincially, nationally and internationally.

**Credit unit(s):** 3.0

**Prerequisite(s):** none

<b>LEGL 161 – Restorative Justice</b> <b>Mastery:</b> I am able to demonstrate it well enough to teach it to someone else. <b>Competent:</b> I can work independently to apply the outcome. <b>None:</b> I have no experience with the outcome.	Mastery	Competent	None
1. Examine the concept of restorative justice.			
2. Describe restorative justice initiatives.			
3. Compare adversarial and restorative approaches to justice.			
4. Describe First Nations initiatives in the criminal justice system.			
5. Examine international restorative roles.			

### PLAR assessment methods

If you qualify for PLAR, you may be asked to demonstrate your learning in one or more of the following ways. Be prepared to discuss the expectations during a consultation meeting.

#### 1. Evidence file

A copy of the employer validation checklist must accompany the evidence file and verify training and skills acquired during the course of employment.

#### 2. Challenge exam/assignment

Candidates may be required to complete an assignment that compares restorative justice initiatives with the current practices utilized in the criminal justice system.

### Resources

Candidates may find the following resources useful in preparing their PLAR challenge:

1. Van Ness and Strong. *Restoring Justice*

**Note:** The Correctional Studies program operates a group website that contains current course materials and links to relevant resources. Once a candidate has applied and been accepted into the program, the candidate will be granted access to the website.

## LERN 140 – Academic Management

You will learn and practice academic management skills that you will need to be successful in a post secondary environment.

**Credit unit(s):** 2.0

**Prerequisite(s):** none

<b>LERN 140 – Academic Management</b> <b>Mastery:</b> I am able to demonstrate it well enough to teach it to someone else. <b>Competent:</b> I can work independently to apply the outcome. <b>None:</b> I have no experience with the outcome.	Mastery	Competent	None
1. Discuss the academic requirements in the correctional studies and Aboriginal Police Preparation program.			
2. Describe personality types and learning styles.			
3. Apply learning/study skills strategies.			
4. Apply problem solving skills.			

### PLAR assessment methods

If you qualify for PLAR, you may be asked to demonstrate your learning in one or more of the following ways. Be prepared to discuss the expectations during a consultation meeting.

#### 1. Evidence file

Provide evidence of successful completion of one year of post secondary programming.

- Any relevant documentation to support courses in study skills, time management, and test taking.

### Resources

No resources required for this course.

## NAST 120 – Aboriginal Studies

You will examine elements of First Nations culture with a view to understanding both historical elements and contemporary issues in Canada. You will also examine information on the residential school system, the struggle of the Métis for legal and cultural recognition and Aboriginal cultural practices as the information applies to the community and law enforcement.

**Credit unit(s):** 4.0

**Prerequisite(s):** none

**Equivalent course(s):** YCW 189

<b>NAST 120 – Aboriginal Studies</b> <b>Mastery:</b> I am able to demonstrate it well enough to teach it to someone else. <b>Competent:</b> I can work independently to apply the outcome. <b>None:</b> I have no experience with the outcome.	Mastery	Competent	None
1. Examine components of law enforcement and Aboriginal people.			
2. Examine current Aboriginal cultural practices.			
3. Examine the pre-contact and first contact periods of Aboriginal people and Europeans.			
4. Examine treaty processes and Indian policy development.			
5. Examine the residential school system of Canada.			
6. Examine contemporary issues of Aboriginal people in Canada.			
7. Examine the history and present day status of the Métis people.			

### PLAR assessment methods

If you qualify for PLAR, you may be asked to demonstrate your learning in one or more of the following ways. Be prepared to discuss the expectations during a consultation meeting.

#### 1. Evidence file

Candidates must provide evidence that they have taken courses that deal with the learning outcomes and that they have participated in cultural events in the Aboriginal community.

#### 2. Challenge exam

Candidates may be required to complete a challenge exam that addresses the learning outcomes in this course.

#### 3. Structured interview

Candidates may be required to complete an interview that addresses the learning outcomes in this course.

## Resources

Candidates may find the following resources useful in preparing their PLAR challenge:

1. Boyington, Roberts, Kazarian. (2008). *Diversity and First Nations Issues in Canada*

**Note:** The Correctional Studies program operates a group website that contains current course materials and links to relevant resources. Once a candidate has applied and been accepted into the program, the candidate will be granted access to the website.

## PERS 142 – Personal Wellness

You will examine aspects of personal wellness with emphasis on maintaining a healthy lifestyle.

**Credit unit(s):** 3.0

**Prerequisite(s):** none

**Equivalent course(s):** ECE 142, PE 181

<b>PERS 142 – Personal Wellness</b> <b>Mastery:</b> I am able to demonstrate it well enough to teach it to someone else. <b>Competent:</b> I can work independently to apply the outcome. <b>None:</b> I have no experience with the outcome.	Mastery	Competent	None
1. Describe an holistic approach to personal wellness.			
2. Examine emotional well being.			
3. Manage stress.			
4. Improve nutrition and physical fitness status.			
5. Examine sexuality and relationships.			
6. Make decisions about alcohol and drug use.			

### PLAR assessment methods

If you qualify for PLAR, you may be asked to demonstrate your learning in one or more of the following ways. Be prepared to discuss the expectations during a consultation meeting.

#### 1. Evidence file

A copy of the employer validation checklist must accompany the evidence file and verify training and skills acquired during the course of employment.

#### 2. Challenge exam

- Candidates may be required to complete a comprehensive exam that addresses the learning outcomes in this course.
- Candidates may be required to complete an assigned journal detailing candidate's life style relating to physical activity and nutrition.

#### 3. Structured interview

Candidates may be required to complete an interview that addresses the learning outcomes in this course.

## Resources

Candidates may find the following resources useful in preparing their PLAR challenge:

1. Focus on Health

**Note:** The Correctional Studies program operates a group website that contains current course materials and links to relevant resources. Once a candidate has applied and been accepted into the program, the candidate will be granted access to the website.

## SPSY 123 – Suicide Intervention

You will learn suicide prevention techniques by completing the ASIST- Living Works Program.

**Credit unit(s):** 1.0

**Prerequisite(s):** none

<b>SPSY 123 – Suicide Intervention</b> <b>Mastery:</b> I am able to demonstrate it well enough to teach it to someone else. <b>Competent:</b> I can work independently to apply the outcome. <b>None:</b> I have no experience with the outcome.	Mastery	Competent	None
1. Examine common perspectives on suicide.			
2. Apply suicide risk assessment.			
3. Demonstrate suicide intervention techniques.			

### PLAR assessment methods

If you qualify for PLAR, you may be asked to demonstrate your learning in one or more of the following ways. Be prepared to discuss the expectations during a consultation meeting.

#### 1. Evidence file

- Candidates must submit evidence of training that specifically addresses the development of intervention skills and assessment in Suicide Intervention.
- A copy of the employer validation checklist must accompany the evidence file and verify training and skills acquired during the course of employment.

## SPSY 124 – Professionalism and Ethics in Corrections

You will study the process of developing values and how they relate to the development of morals and ethics. The roles of values clarification and moral dilemmas, as they apply to professionalism in the field of corrections, will also be examined. You will be asked to demonstrate appropriate work ethics.

**Credit unit(s):** 3.0

**Prerequisite(s):** none

**Equivalent course(s):** SPSY 184

<b>SPSY 124 – Professionalism and Ethics in Corrections</b> <b>Mastery:</b> I am able to demonstrate it well enough to teach it to someone else. <b>Competent:</b> I can work independently to apply the outcome. <b>None:</b> I have no experience with the outcome.	Mastery	Competent	None
1. Examine the link between ethics education, individual values and moral behaviour.			
2. Examine the correctional code of ethics.			
3. Examine the effects of subculture pressure on peace officer conduct.			
4. Examine the link between values, morals and discretionary powers.			

### PLAR assessment methods

If you qualify for PLAR, you may be asked to demonstrate your learning in one or more of the following ways. Be prepared to discuss the expectations during a consultation meeting.

#### 1. Evidence file

A copy of the employer validation checklist must accompany the evidence file and verify training and skills acquired during the course of employment.

#### 2. Challenge exam/assignment

Candidates may be required to complete an assignment that requires analysis of moral dilemmas in the field of Corrections.

#### 3. Structured interview

Candidates may be required to complete an interview that addresses the learning outcomes in this course.

### Resources

Candidates may find the following resources useful in preparing their PLAR challenge:

1. Jones. *Reputable Conduct: Ethical Issues in Policing and Corrections*

**Note:** The Correctional Studies program operates a group website that contains current course materials and links to relevant resources. Once a candidate has applied and been accepted into the program, the candidate will be granted access to the website.

## SPSY 240 – Workplace Harassment Prevention

You will examine the concepts of respectful communication and harassment prevention in workplace settings. Your studies will focus on the Harassment Free Workplace Policy with opportunity to practice respectful workplace interactions.

**Credit unit(s):** 1.0

**Prerequisite(s):** SPSY 124 minimum grade of 60

<b>SPSY 240 – Workplace Harassment Prevention</b> <b>Mastery:</b> I am able to demonstrate it well enough to teach it to someone else. <b>Competent:</b> I can work independently to apply the outcome. <b>None:</b> I have no experience with the outcome.	Mastery	Competent	None
1. Examine the concept of respectful communication.			
2. Describe how harassment is expressed in the workplace.			
3. Describe harassment free workplace policies.			
4. Explain strategies to stop harassment.			

### PLAR assessment methods

If you qualify for PLAR, you may be asked to demonstrate your learning in one or more of the following ways. Be prepared to discuss the expectations during a consultation meeting.

#### 1. Evidence file

A copy of the employer validation checklist must accompany the evidence file and verify training and skills acquired during the course of employment that specifically address harassment in the workplace.

## Year 2

### CORR 158 – Sex Offenders

You will examine the profile of the sex offender and management strategies in institutions. You will study treatment strategies and relapse interventions available in the institution and the community.

**Credit unit(s):** 3.0

**Prerequisite(s):** none

<b>CORR 158 – Sex Offenders</b> <b>Mastery:</b> I am able to demonstrate it well enough to teach it to someone else. <b>Competent:</b> I can work independently to apply the outcome. <b>None:</b> I have no experience with the outcome.	Mastery	Competent	None
1. Examine categorization of sexual offences.			
2. Examine profiles of sex offenders.			
3. Describe treatment programs for sex offenders.			
4. Describe relapse prevention strategies for sex offenders.			
5. Apply relapse prevention strategies to sex offender case management.			

### PLAR assessment methods

If you qualify for PLAR, you may be asked to demonstrate your learning in one or more of the following ways. Be prepared to discuss the expectations during a consultation meeting.

#### 1. Evidence file

A copy of the employer validation checklist must accompany the evidence file and verify training and skills acquired during the course of employment that specifically address the learning outcomes.

- Candidates must demonstrate that they have worked directly with sex offenders in order to PLAR this course.

#### 2. Challenge exam

Candidates may be required to complete a series of case studies.

### Resources

**Note:** The Correctional Studies program operates a group website that contains current course materials and links to relevant resources. Once a candidate has applied and been accepted into the program, the candidate will be granted access to the website.

## CORR 179 – Offender Supervision

You will gain an understanding of offender typologies and develop specific skills for supervising inmates. You will learn institutional policies relating to offender management and apply supervisory skills in a variety of situations.

**Credit unit(s):** 3.0

**Prerequisite(s):** none

<b>CORR 179 – Offender Supervision</b> <b>Mastery:</b> I am able to demonstrate it well enough to teach it to someone else. <b>Competent:</b> I can work independently to apply the outcome. <b>None:</b> I have no experience with the outcome.	Mastery	Competent	None
1. Define offender strategy groups.			
2. Identify correctional officer performance standards.			
3. Examine institutional policies relating to offender management.			
4. Assess offender supervisory situations.			
5. Apply offender supervisory skills.			

### PLAR assessment methods

If you qualify for PLAR, you may be asked to demonstrate your learning in one or more of the following ways. Be prepared to discuss the expectations during a consultation meeting.

#### 1. Evidence file

Typically PLAR will only be granted for this course if a candidate has worked in an adult correctional facility as a correctional officer.

- A copy of the employer validation checklist must accompany the evidence file and verify training and skills acquired during the course of employment.

### Resources

**Note:** The Correctional Studies program operates a group website that contains current course materials and links to relevant resources. Once a candidate has applied and been accepted into the program, the candidate will be granted access to the website.

## CORR 183 – Correctional Reporting Procedures

You will develop observational skills which support the objectives of the offender disciplinary process. Based on these acquired skills, you will write reports common to federal and provincial corrections. You will also link information in institutional reports to the delivery of testimony in both institutional and open court systems.

**Credit unit(s):** 3.0

**Prerequisite(s):** none

<b>CORR 183 – Correctional Reporting Procedures</b> <b>Mastery:</b> I am able to demonstrate it well enough to teach it to someone else. <b>Competent:</b> I can work independently to apply the outcome. <b>None:</b> I have no experience with the outcome.	Mastery	Competent	None
1. Use effective listening and observation skills to collect information.			
2. Apply observation skills to correctional situations.			
3. Review procedures for inmate discipline.			
4. Construct institutional reports.			
5. Present testimony and evidence in courtroom.			

### PLAR assessment methods

If you qualify for PLAR, you may be asked to demonstrate your learning in one or more of the following ways. Be prepared to discuss the expectations during a consultation meeting.

#### 1. Evidence file

Typically PLAR will only be granted for this course if a candidate has worked in an adult correctional facility as a correctional officer.

- A copy of the employer validation checklist must accompany the evidence file and verify training and skills acquired during the course of employment.

### Resources

**Note:** The Correctional Studies program operates a group website that contains current course materials and links to relevant resources. Once a candidate has applied and been accepted into the program, the candidate will be granted access to the website.

## CORR 184 – Introduction to Case Management

You will examine the federal and provincial case management process from sentencing to the development of initial case plans.

**Credit unit(s):** 2.0

**Prerequisite(s):** none

<b>CORR 184 – Introduction to Case Management</b> <b>Mastery:</b> I am able to demonstrate it well enough to teach it to someone else. <b>Competent:</b> I can work independently to apply the outcome. <b>None:</b> I have no experience with the outcome.	Mastery	Competent	None
1. Examine case needs identification and analysis.			
2. Identify the role of institutional and community programs in the Correctional Planning process.			
3. Outline the components of the case planning process.			
4. Develop a Correctional Plan.			

### PLAR assessment methods

If you qualify for PLAR, you may be asked to demonstrate your learning in one or more of the following ways. Be prepared to discuss the expectations during a consultation meeting.

#### 1. Evidence file

Typically PLAR will only be granted for this course if a candidate has worked in an adult correctional facility and has been required to complete offender case plans.

- A copy of the employer validation checklist must accompany the evidence file and verify training and skills acquired during the course of employment.

### Resources

**Note:** The Correctional Studies program operates a group website that contains current course materials and links to relevant resources. Once a candidate has applied and been accepted into the program, the candidate will be granted access to the website.

## CORR 185 – Managing the Offender Case Plan

You will examine the process by which offender progress is monitored in federal and provincial institutions. Specific emphasis will be placed on the case planning required to prepare offenders for reintegration back into the community.

**Credit unit(s):** 1.0

**Prerequisite(s):** none

<b>CORR 185 – Managing the Offender Case Plan</b> <b>Mastery:</b> I am able to demonstrate it well enough to teach it to someone else. <b>Competent:</b> I can work independently to apply the outcome. <b>None:</b> I have no experience with the outcome.	Mastery	Competent	None
1. Analyze offender progress against the Correctional Plan.			
2. Examine the institutional factors that contribute to the determination of the offender's level of risk.			
3. Examine the institutional decision making process.			
4. Utilize federal and provincial reports related to case planning.			
5. Construct reports specific to conditional release.			

### PLAR assessment methods

If you qualify for PLAR, you may be asked to demonstrate your learning in one or more of the following ways. Be prepared to discuss the expectations during a consultation meeting.

#### 1. Evidence file

Typically PLAR will only be granted for this course if a candidate has worked in an adult correctional facility and has been required to complete offender case plans.

- A copy of the employer validation checklist must accompany the evidence file and verify training and skills acquired during the course of employment.

### Resources

**Note:** The Correctional Studies program operates a group website that contains current course materials and links to relevant resources. Once a candidate has applied and been accepted into the program, the candidate will be granted access to the website.

## CORR 186 – Offender Release and Community Supervision

You will examine the conditional release process and the intervention strategies utilized in community release plans.

**Credit unit(s):** 1.0

**Prerequisite(s):** none

<b>CORR 186 – Offender Release and Community Supervision</b> <b>Mastery:</b> I am able to demonstrate it well enough to teach it to someone else. <b>Competent:</b> I can work independently to apply the outcome. <b>None:</b> I have no experience with the outcome.	Mastery	Competent	None
1. Examine the National Parole Board decision making process.			
2. Identify the roles of parole and probation officers in post release community supervision.			
3. Analyze intervention strategies for persons at risk for re-offending.			
4. Write suspension/violation reports.			

### PLAR assessment methods

If you qualify for PLAR, you may be asked to demonstrate your learning in one or more of the following ways. Be prepared to discuss the expectations during a consultation meeting.

#### 1. Evidence file

Typically PLAR will only be granted for this course if a candidate has worked in an adult correctional facility and has been required to complete offender case plans.

- A copy of the employer validation checklist must accompany the evidence file and verify training and skills acquired during the course of employment.

### Resources

**Note:** The Correctional Studies program operates a group website that contains current course materials and links to relevant resources. Once a candidate has applied and been accepted into the program, the candidate will be granted access to the website.

## CORR 187 – Violent Offenders

You will identify the categories of violent offenders and discuss the impact the offenders have on the operation of federal and provincial institutions. You will also examine intervention strategies for violent offenders both in the institution and the community.

**Credit unit(s):** 3.0

**Prerequisite(s):** none

<b>CORR 187 – Violent Offenders</b> <b>Mastery:</b> I am able to demonstrate it well enough to teach it to someone else. <b>Competent:</b> I can work independently to apply the outcome. <b>None:</b> I have no experience with the outcome.	Mastery	Competent	None
1. Identify violent offender typologies.			
2. Examine the impact of violent offenders on institutional operations.			
3. Examine interventions strategies used to address violent offenders.			
4. Describe dangerous offender designation.			
5. Examine community intervention strategies to manage violent offenders in the community.			

## PLAR assessment methods

If you qualify for PLAR, you may be asked to demonstrate your learning in one or more of the following ways. Be prepared to discuss the expectations during a consultation meeting.

### 1. Evidence file

Typically PLAR will only be granted for this course if a candidate has worked in an adult correctional facility as a correctional officer.

- A copy of the employer validation checklist must accompany the evidence file and verify training and skills acquired during the course of employment.

## Resources

**Note:** The Correctional Studies program operates a group website that contains current course materials and links to relevant resources. Once a candidate has applied and been accepted into the program, the candidate will be granted access to the website.

## CORR 188 – Program Planning and Delivery

You will study the process of developing and implementing programs suitable for delivery to offenders in both institutional and community settings. You will develop program goals (learning outcomes) and objectives (learning steps), identify learning activities, write lesson plans and develop program resources. You will have the opportunity to deliver a 3 hour presentation to offenders as part of this course.

**Credit unit(s):** 3.0

**Prerequisite(s):** none

<b>CORR 188 – Program Planning and Delivery</b> <b>Mastery:</b> I am able to demonstrate it well enough to teach it to someone else. <b>Competent:</b> I can work independently to apply the outcome. <b>None:</b> I have no experience with the outcome.	Mastery	Competent	None
1. Discuss programs suitable for delivery to the offender population.			
2. Identify components of program development.			
3. Develop learning outcomes and learning steps.			
4. Develop lesson plans and activities.			
5. Develop program resources.			
6. Deliver lesson to offender group.			

### PLAR assessment methods

If you qualify for PLAR, you may be asked to demonstrate your learning in one or more of the following ways. Be prepared to discuss the expectations during a consultation meeting.

#### 1. Evidence file

Candidates will be required to demonstrate that they have planned and delivered programs to small groups.

- A copy of the employer validation checklist must accompany the evidence file and verify training and skills acquired during the course of employment.

#### 2. Challenge exam/assignments

Candidates may be required to submit detailed lesson plans as part of the PLAR assessment.

### Resources

**Note:** The Correctional Studies program operates a group website that contains current course materials and links to relevant resources. Once a candidate has applied and been accepted into the program, the candidate will be granted access to the website.

## CORR 240 – Institutional Corrections

You will study the various offender subcultures and the effect that prison gangs have on institutional operations. You will analyze how offenders set up staff members in an institutional setting and practice responding accordingly. You will also review legislative and policy directives that impact on the administration of security within institutions. You will also examine inmates' rights and redress.

**Credit unit(s):** 3.0

**Prerequisite(s):** none

<b>CORR 240 – Institutional Corrections</b> <b>Mastery:</b> I am able to demonstrate it well enough to teach it to someone else. <b>Competent:</b> I can work independently to apply the outcome. <b>None:</b> I have no experience with the outcome.	Mastery	Competent	None
1. Analyze legislation and policy directives that govern the duties of a correctional officer.			
2. Examine the rights and responsibilities continuum as it applies to correctional institutions.			
3. Analyze the impact of incarceration.			
4. Analyze elements of prison culture and sub culture.			
5. Analyze the effect of prison gangs on institutional operations.			
6. Explore the impact of organized crime in correctional facilities.			
7. Apply principles of Anatomy of a Set Up.			
8. Examine policies governing inmates' rights and redress.			

### PLAR assessment methods

If you qualify for PLAR, you may be asked to demonstrate your learning in one or more of the following ways. Be prepared to discuss the expectations during a consultation meeting.

#### 1. Evidence file

Typically PLAR will only be granted for this course if a candidate has worked in an adult correctional facility as a correctional officer.

- A copy of the employer validation checklist must accompany the evidence file and verify training and skills acquired during the course of employment.

### Resources

**Note:** The Correctional Studies program operates a group website that contains current course materials and links to relevant resources. Once a candidate has applied and been accepted into the program, the candidate will be granted access to the website.

## CORR 241 – Security Foundations

You will examine the basic foundations of providing security in an institutional setting. You will learn the primary role of the correctional officer in providing care, custody and control of offenders. You will also study the concepts of dynamic and static security and individual security features that provide safety to the public, staff and offenders in institutional settings.

**Credit unit(s):** 2.0

**Prerequisite(s):** none

<b>CORR 241 – Security Foundations</b> <b>Mastery:</b> I am able to demonstrate it well enough to teach it to someone else. <b>Competent:</b> I can work independently to apply the outcome. <b>None:</b> I have no experience with the outcome.	Mastery	Competent	None
1. Examine elements of care, custody and control.			
2. Explain dynamic and static security.			
3. Examine techniques for controlling institutional movement.			
4. Explain concepts of safety and risk.			

### PLAR assessment methods

If you qualify for PLAR, you may be asked to demonstrate your learning in one or more of the following ways. Be prepared to discuss the expectations during a consultation meeting.

#### 1. Evidence file

Typically PLAR will only be granted for this course if a candidate has worked in an adult correctional facility as a correctional officer.

- A copy of the employer validation checklist must accompany the evidence file and verify training and skills acquired during the course of employment.

### Resources

**Note:** The Correctional Studies program operates a group website that contains current course materials and links to relevant resources. Once a candidate has applied and been accepted into the program, the candidate will be granted access to the website.

## CORR 242 – Elements of Security

You will examine the elements of security as it relates to the front line correctional officer. You will define and identify various types of contraband found in correctional institutions as well as learn how to gather and preserve evidence. You will analyze the Situation Management Model, the Use of Force Management Model and the Community. Assess, Partners, Resources, Activate (CAPRA) Model as a means of response options to offender behaviour. You will also receive hands-on instruction in the application of restraint equipment, and the procedural applications of searching techniques, controlling contraband and the use of force.

**Credit unit(s):** 4.0

**Prerequisite(s):** none

<b>CORR 242 – Elements of Security</b> <b>Mastery:</b> I am able to demonstrate it well enough to teach it to someone else. <b>Competent:</b> I can work independently to apply the outcome. <b>None:</b> I have no experience with the outcome.	Mastery	Competent	None
1. Examine contraband within an institutional setting.			
2. Apply preservation of evidence techniques.			
3. Apply the Situation Management model and the Use of Force Management model.			
4. Apply the CAPRA problem solving model.			
5. Apply search and seizure techniques.			
6. Apply restraint equipment techniques.			

### PLAR assessment methods

If you qualify for PLAR, you may be asked to demonstrate your learning in one or more of the following ways. Be prepared to discuss the expectations during a consultation meeting.

#### 1. Evidence file

Typically PLAR will only be granted for this course if a candidate has worked in an adult correctional facility as a correctional officer.

- A copy of the employer validation checklist must accompany the evidence file and verify training and skills acquired during the course of employment.

### Resources

**Note:** The Correctional Studies program operates a group website that contains current course materials and links to relevant resources. Once a candidate has applied and been accepted into the program, the candidate will be granted access to the website.

## CORR 243 – Major Incidents

You will examine indicators that contribute to disturbances and major incidents that occur in prisons. You will be introduced to the crisis management process as a means of address in various disturbances and major incidents. You will further examine contingency plans, procedural policies and resource teams related to responding to institutional emergencies.

**Credit unit(s):** 2.0

**Prerequisite(s):** none

<b>CORR 243 – Major Incidents</b> <b>Mastery:</b> I am able to demonstrate it well enough to teach it to someone else. <b>Competent:</b> I can work independently to apply the outcome. <b>None:</b> I have no experience with the outcome.	Mastery	Competent	None
1. Examine elements of major incidents and their causes including riots, disturbances and institutional emergencies.			
2. Examine contingency plans.			
3. Describe hostage taking and hostage negotiation.			
4. Describe the role of Institutional Emergency Response Team.			
5. Describe the process of critical incident stress debriefing.			

## PLAR assessment methods

If you qualify for PLAR, you may be asked to demonstrate your learning in one or more of the following ways. Be prepared to discuss the expectations during a consultation meeting.

### 1. Evidence file

Typically PLAR will only be granted for this course if a candidate has worked in an adult correctional facility as a correctional officer.

- A copy of the employer validation checklist must accompany the evidence file and verify training and skills acquired during the course of employment.

## Resources

**Note:** The Correctional Studies program operates a group website that contains current course materials and links to relevant resources. Once a candidate has applied and been accepted into the program, the candidate will be granted access to the website.

## CORR 245 – Job Preparation

You will develop skills that allow you to successfully compete for jobs in the field of corrections and other related law enforcement careers.

**Credit unit(s):** 2.0

**Prerequisite(s):** CORR 119 minimum grade of 60

<b>CORR 245 – Job Preparation</b> <b>Mastery:</b> I am able to demonstrate it well enough to teach it to someone else. <b>Competent:</b> I can work independently to apply the outcome. <b>None:</b> I have no experience with the outcome.	Mastery	Competent	None
1. Review corrections worker core competencies.			
2. Develop a covering letter.			
3. Develop a resume.			
4. Apply job interview skills.			

### PLAR assessment methods

If you qualify for PLAR, you may be asked to demonstrate your learning in one or more of the following ways. Be prepared to discuss the expectations during a consultation meeting.

#### 1. Evidence file

Candidates must provide documentation that they have successfully completed the screening and hiring process in either federal or provincial corrections.

### Resources

**Note:** The Correctional Studies program operates a group website that contains current course materials and links to relevant resources. Once a candidate has applied and been accepted into the program, the candidate will be granted access to the website.

## EMPS 240 – Workplace Wellness

You will examine various topics and practices relating to maintaining personal safety in a hostile work environment.

**Credit unit(s):** 1.0

**Prerequisite(s):** none

<b>EMPS 240 – Workplace Wellness</b> <b>Mastery:</b> I am able to demonstrate it well enough to teach it to someone else. <b>Competent:</b> I can work independently to apply the outcome. <b>None:</b> I have no experience with the outcome.	Mastery	Competent	None
1. Review workplace legislation relating to safety and well being.			
2. Develop an awareness of employee rights and responsibilities.			
3. Manage personal and occupational issues in a correctional setting.			

### PLAR assessment methods

If you qualify for PLAR, you may be asked to demonstrate your learning in one or more of the following ways. Be prepared to discuss the expectations during a consultation meeting.

#### 1. Evidence file

A copy of the employer validation checklist must accompany the evidence file and verify training and skills acquired during the course of employment that meet the learning outcomes of this course.

### Resources

**Note:** The Correctional Studies program operates a group website that contains current course materials and links to relevant resources. Once a candidate has applied and been accepted into the program, the candidate will be granted access to the website.

## SPSY 121 – Addictions

You will examine the nature of addictions and the various treatment options available both in institutions and the community.

**Credit unit(s):** 3.0

**Prerequisite(s):** COMM 112 minimum grade of 60 and CORR 134 minimum grade of 60

**Equivalent course(s):** YCW 284

<b>SPSY 121 - Addictions</b> <b>Mastery:</b> I am able to demonstrate it well enough to teach it to someone else. <b>Competent:</b> I can work independently to apply the outcome. <b>None:</b> I have no experience with the outcome.	Mastery	Competent	None
1. Describe the effects of alcohol and other drugs.			
2. Examine addiction and addiction intervention/treatment strategies.			
3. Describe the impact of FASD on offender behavior.			
4. Describe assessment and screening procedures.			
5. Examine the federal and provincial corrections substance abuse strategies.			
6. Examine harm reduction strategies.			

### PLAR assessment methods

If you qualify for PLAR, you may be asked to demonstrate your learning in one or more of the following ways. Be prepared to discuss the expectations during a consultation meeting.

#### 1. Evidence file

A copy of the employer validation checklist must accompany the evidence file and verify training and skills acquired during the course of employment in the field of addictions.

#### 2. Challenge exam

Candidates may be required to complete a comprehensive challenge exam or assignment that addresses the learning outcomes in this course.

#### 3. Structured interview

Candidates may be required to complete a structured interview that addresses the learning outcomes in this course.

### Resources

**Note:** The Correctional Studies program operates a group website that contains current course materials and links to relevant resources. Once a candidate has applied and been accepted into the program, the candidate will be granted access to the website.

## SPSY 241 – Family Violence

You will study the cycle of violence in a family setting. You will apply this knowledge to understanding the perpetrator and the victim when planning interventions. You will explore victim and offender treatment programs available in the institution and the community.

**Credit unit(s):** 2.0

**Prerequisite(s):** none

<b>SPSY 241 – Family Violence</b> <b>Mastery:</b> I am able to demonstrate it well enough to teach it to someone else. <b>Competent:</b> I can work independently to apply the outcome. <b>None:</b> I have no experience with the outcome.	Mastery	Competent	None
1. Examine theories and models of family violence.			
2. Describe characteristics of family violence.			
3. Examine current legislation dealing with family violence.			

### PLAR assessment methods

If you qualify for PLAR, you may be asked to demonstrate your learning in one or more of the following ways. Be prepared to discuss the expectations during a consultation meeting.

#### 1. Evidence file

Candidates must provide evidence that they have taken training that addresses the learning outcomes in this course.

- A copy of the employer validation checklist must accompany the evidence file and verify training and skills acquired during the course of employment.

#### 2. Challenge exam/assignment

Candidates may be required to complete a comprehensive challenge exam or assignment that addresses the learning outcomes in this course.

#### 3. Structured interview

Candidates may be required to complete a structured interview that addresses the learning outcomes in this course.

### Resources

**Note:** The Correctional Studies program operates a group website that contains current course materials and links to relevant resources. Once a candidate has applied and been accepted into the program, the candidate will be granted access to the website.

## WORK 123 – Corrections Institutional Work Experience

You will participate in a work experience in a provincial correctional centre or a federal penitentiary where you will demonstrate correction officer core competencies. Your work experience will provide you with the opportunity to practice and refine your skills.

**Credit unit(s):** 0.0

**Prerequisite(s):** none

<b>WORK 123 – Corrections Institutional Work Experience</b> <b>Mastery:</b> I am able to demonstrate it well enough to teach it to someone else. <b>Competent:</b> I can work independently to apply the outcome. <b>None:</b> I have no experience with the outcome.	Mastery	Competent	None
1. Identify dynamic security skills.			
2. Identify static security procedures.			
3. Identify effective interpersonal skills.			
4. Identify effective offender supervision.			
5. Complete reports.			
6. Observe case management process.			
7. Observe policy and directives.			
8. Demonstrate the attitudes and actions of an exemplary correctional officer.			

### PLAR assessment methods

If you qualify for PLAR, you may be asked to demonstrate your learning in one or more of the following ways. Be prepared to discuss the expectations during a consultation meeting.

#### 1. Evidence file

Candidates must provide evidence that they have completed 480 hours of continuous employment in a one year period in a law enforcement setting.

- A copy of the employer validation checklist must accompany the evidence file and verify training and skills acquired during the course of employment.
- Work sites that are not correctional facilities will be assessed on an individual basis to determine suitability as a site for this work experience.

### Resources

**Note:** The Correctional Studies program operates a group website that contains current course materials and links to relevant resources. Once a candidate has applied and been accepted into the program, the candidate will be granted access to the website.

## WORK 124 – Corrections Work Experience

You will participate in a work experience in a correctional program where you will demonstrate on-the-job corrections worker skills. Your work experience will provide you with the opportunity to practice and refine your skills in a corrections setting with serving offenders.

**Credit unit(s):** 0.0

**Prerequisite(s):** none

<b>WORK 124 – Corrections Work Experience</b>	<b>Mastery</b>	<b>Competent</b>	<b>None</b>
<b>Mastery:</b> I am able to demonstrate it well enough to teach it to someone else.			
<b>Competent:</b> I can work independently to apply the outcome.			
<b>None:</b> I have no experience with the outcome.			
1. Identify dynamic security skills.			
2. Identify static security procedures.			
3. Identify effective interpersonal skills.			
4. Identify effective offender supervision.			
5. Complete reports.			
6. Observe case management process.			
7. Observe policy and directives.			
8. Demonstrate the attitudes and actions of an exemplary correctional officer.			

### PLAR assessment methods

If you qualify for PLAR, you may be asked to demonstrate your learning in one or more of the following ways. Be prepared to discuss the expectations during a consultation meeting.

#### 1. Evidence file

Typically PLAR will only be granted for this course if a candidate has worked in an adult correctional facility as a correctional officer.

- A copy of the employer validation checklist must accompany the evidence file and verify training and skills acquired during the course of employment.

### Resources

**Note:** The Correctional Studies program operates a group website that contains current course materials and links to relevant resources. Once a candidate has applied and been accepted into the program, the candidate will be granted access to the website.